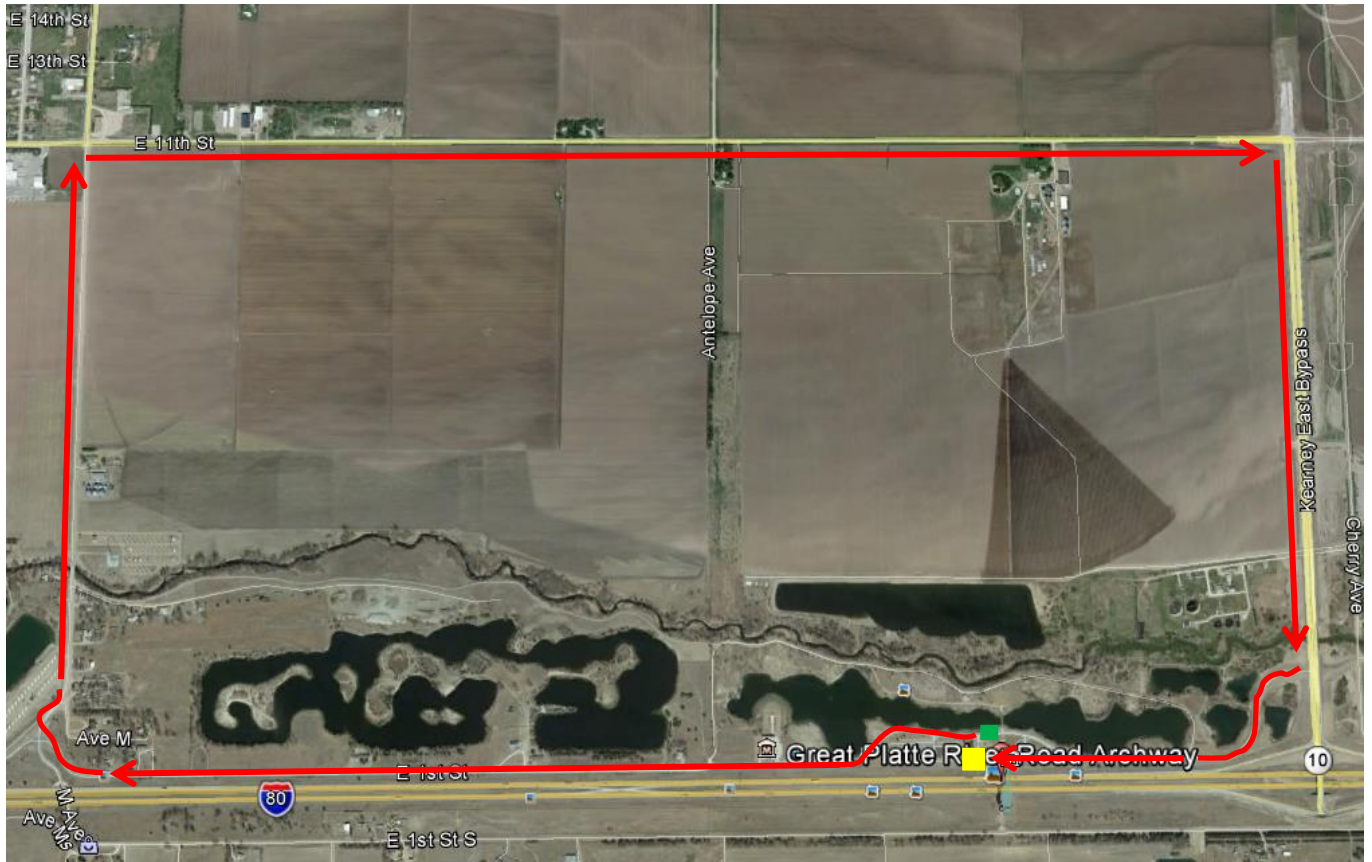


20k & 40k Cycling Course



The 20k & 40k Road Races will begin in front of the Archway. The race will head west and turn right on Avenue M. Riders will then turn right onto 11th Street and then take another right onto Kearney East Bypass. Riders will then turn right onto East 1st Street and finish where they started.

20k = 2 laps

40k = 4 laps



Parking



Start/Finish

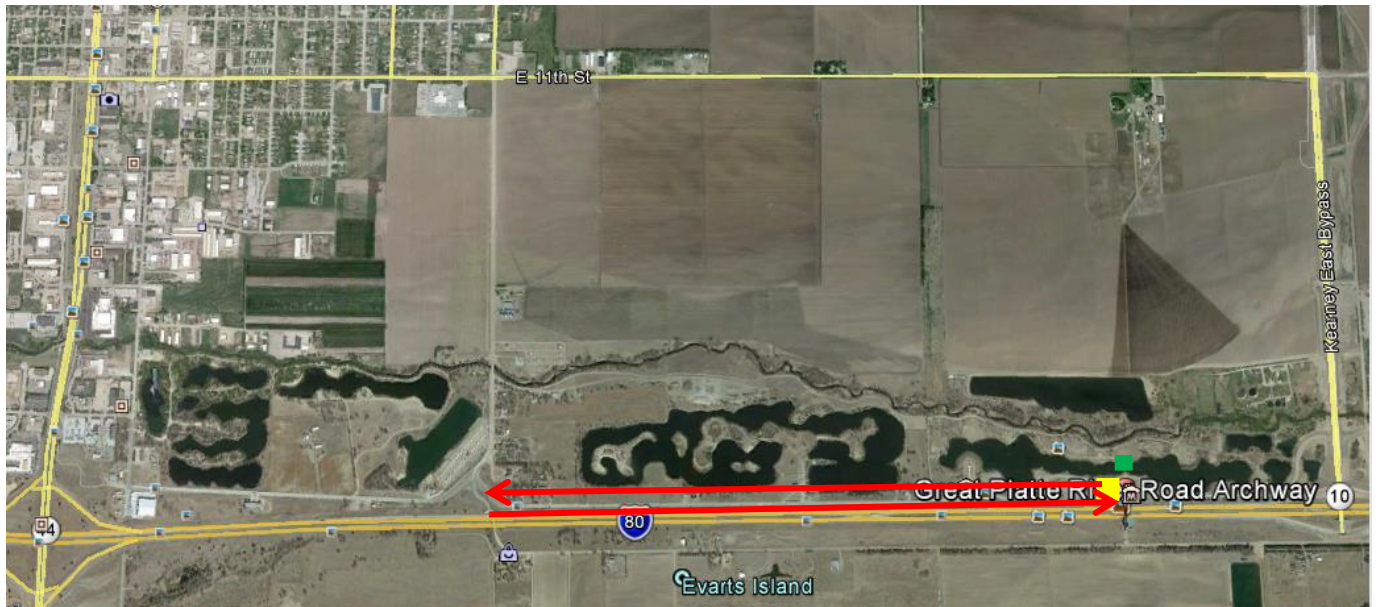


10k Cycling Course



The 10k will begin at the Archway. Cyclist will bike to Avenue M (west), turn right onto Avenue M (north) and bike to 11th Street. Turnaround and bike back to East 1st Street. Cyclist will turn right on East 1st Street and bike west until a turnaround point. Cyclist will then bike back (east) to the Start/Finish line. Cyclist will have a running start, once they cross the start line, clock will start.

5k Cycling Course



The 5k will begin at the Archway. Cyclist will bike to Avenue M (west) and back. Cyclist will have a running start, once they cross the start line, clock will start.